

# MONTHLY MEMBERSHIP PROGRESS REPORT

LOCATION COLORADO

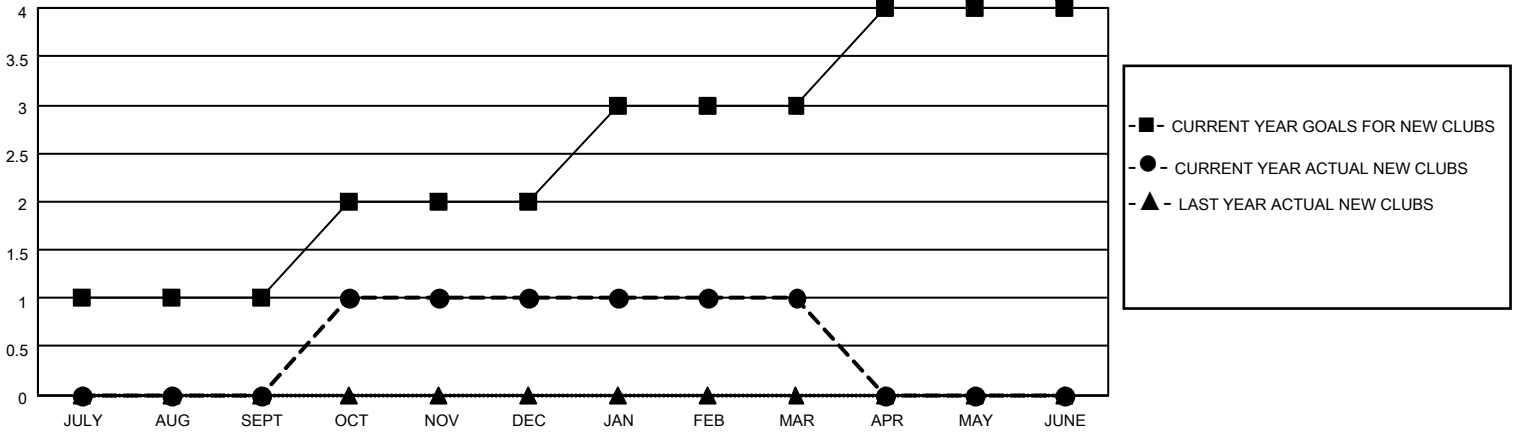
District 6 NE

Results as of: 3/31/2022

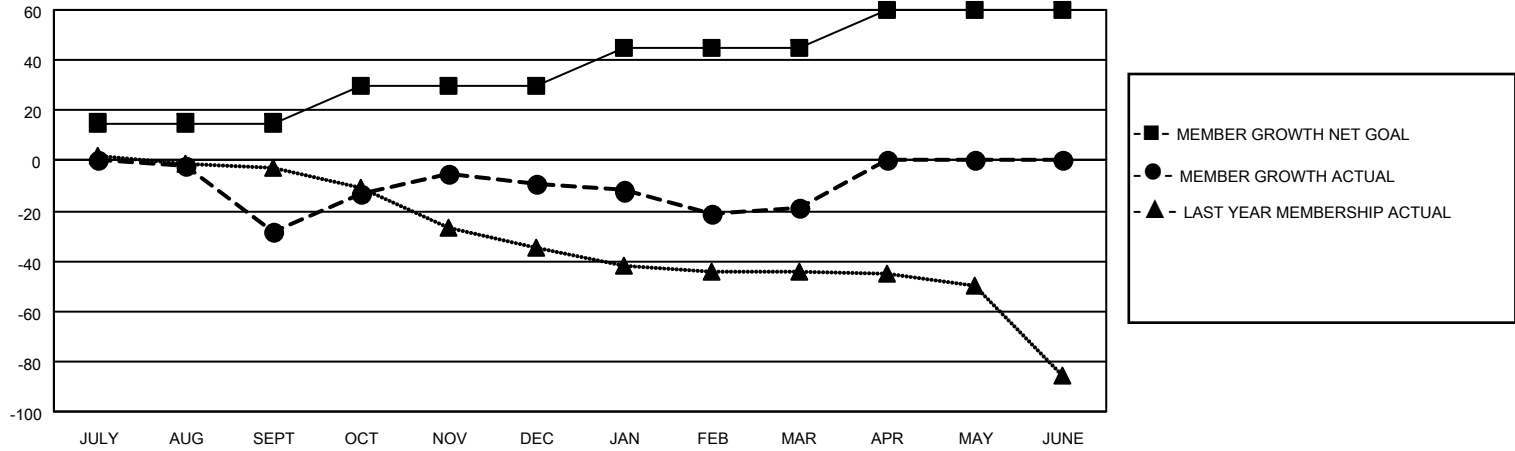
| Clubs                 |               |           |               |
|-----------------------|---------------|-----------|---------------|
| RESULTS FOR 2021-2022 |               |           |               |
| QUARTER               | NEW CLUB GOAL | NEW CLUBS | DROPPED CLUBS |
| JULY/AUG/SEPT         | 1             | 0         | 6             |
| OCT/NOV/DEC           | 1             | 1         | 1             |
| JAN/FEB/MAR           | 1             | 0         | 0             |
| APR/MAY/JUNE          | 1             | 0         | 0             |

| Members               |                        |                      |                                                 |
|-----------------------|------------------------|----------------------|-------------------------------------------------|
| RESULTS FOR 2021-2022 |                        |                      |                                                 |
| QUARTER               | MEMBER GROWTH NET GOAL | MEMBER GROWTH ACTUAL | DROPPED MEMBERS ACTUAL<br>(including transfers) |
| JULY/AUG/SEPT         | 15                     | 17                   | 41                                              |
| OCT/NOV/DEC           | 15                     | 84                   | 48                                              |
| JAN/FEB/MAR           | 15                     | 20                   | 29                                              |
| APR/MAY/JUNE          | 15                     | 0                    | 0                                               |

**GOALS AND ACTUAL NEW CLUBS CUMULATIVE**



**GOALS AND ACTUAL MEMBERS CUMULATIVE**



|                        |            |
|------------------------|------------|
| DROPPED CLUBS: 7       |            |
| <u>DROPPED MEMBERS</u> |            |
| DECEASED               | 13         |
| CLUB CANCELLED         | 17         |
| OTHER                  | 88         |
| <b>TOTAL</b>           | <b>118</b> |

18 CLUBS OF 42 ADDED 1 OR MORE NEW MEMBERS

[CLICK HERE FOR CUMULATIVE MEMBERSHIP DATA](#)

| <u>GENDER DISTRIBUTION</u>             |              |
|----------------------------------------|--------------|
| MALE                                   | 531 (62.77%) |
| FEMALE                                 | 315 (37.23%) |
| NON BINARY                             | 0 (0.00%)    |
| PREFER NOT TO ANSWER                   | 0 (0.00%)    |
| <b>TOTAL FAMILY UNIT MEMBERS</b>       | <b>200</b>   |
| <b>FAMILY MEMBERS PAYING HALF DUES</b> | <b>104</b>   |